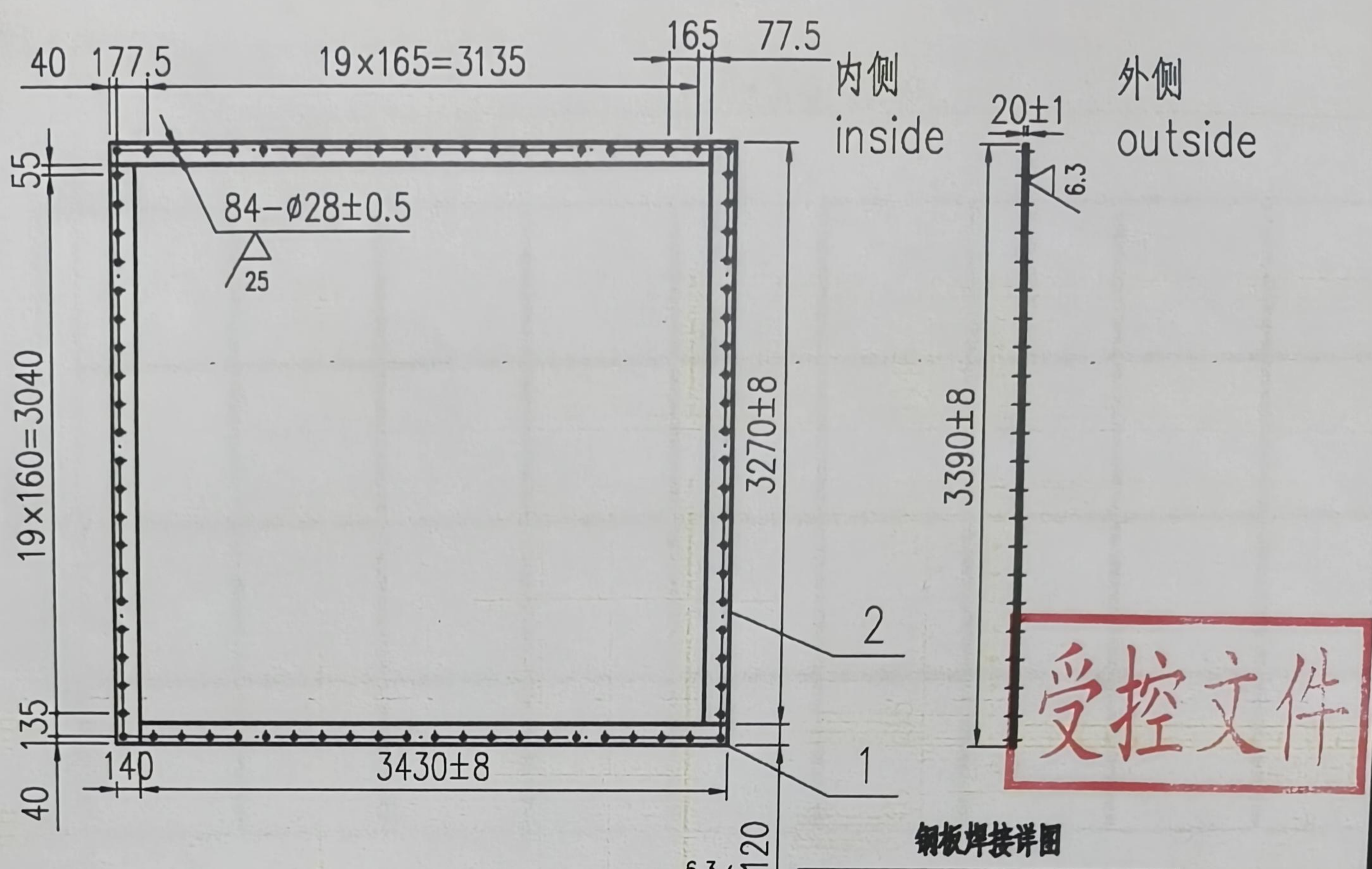
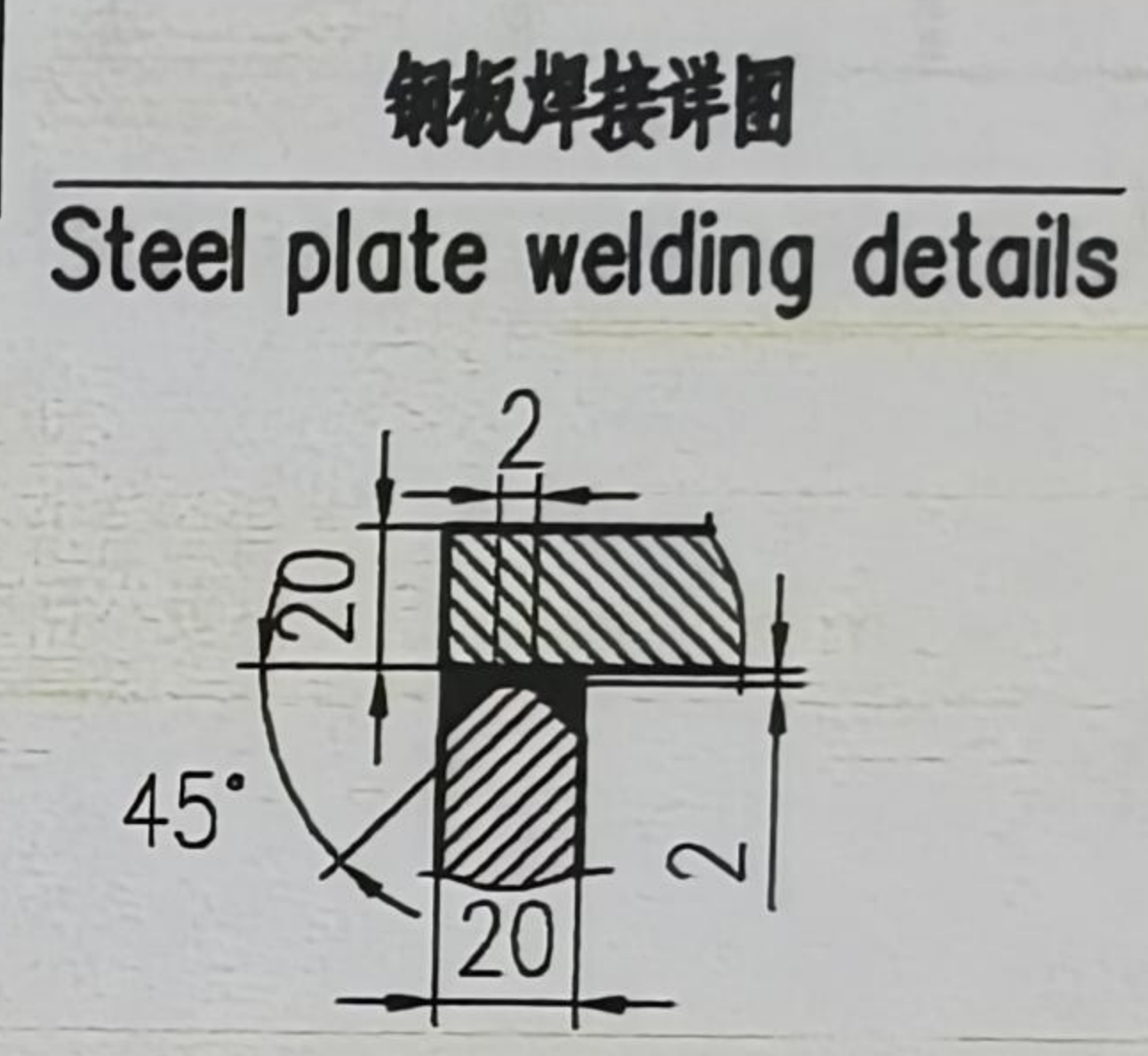


DISCIPLINE	SIGNATURE	DATE



- 技术要求:
1. 螺栓孔直径偏差±0.5
 2. 相邻两个螺栓孔尺寸偏差±1mm.
 3. 任意两个螺栓孔中心距: ±2mm
- Technical requirements:
1. Deviation of bolt hole diameter: ±0.5
 2. Dimension deviation of two adjacent bolt holes: ± 1mm.
 3. The center distance between any two bolt holes: ± 2mm



2	按本图 According to this diagram	钢板II 3270x140x20 Steel plate II	2	Q235B	71.9	143.8	
1	按本图 According to this diagram	钢板I 3430x120x20 Steel plate I	2	Q235B	64.6	129.2	
件号 PART NO.	图号或标准号 DWG OR STD NO.	名称 DESCRIPTION	数量 QTY.	材料 MATERIAL	单 SINGLE 重量(kg)	总 TOTAL WEIGHT	备注 REMARK
R4_0-D-02	2023-05-26						

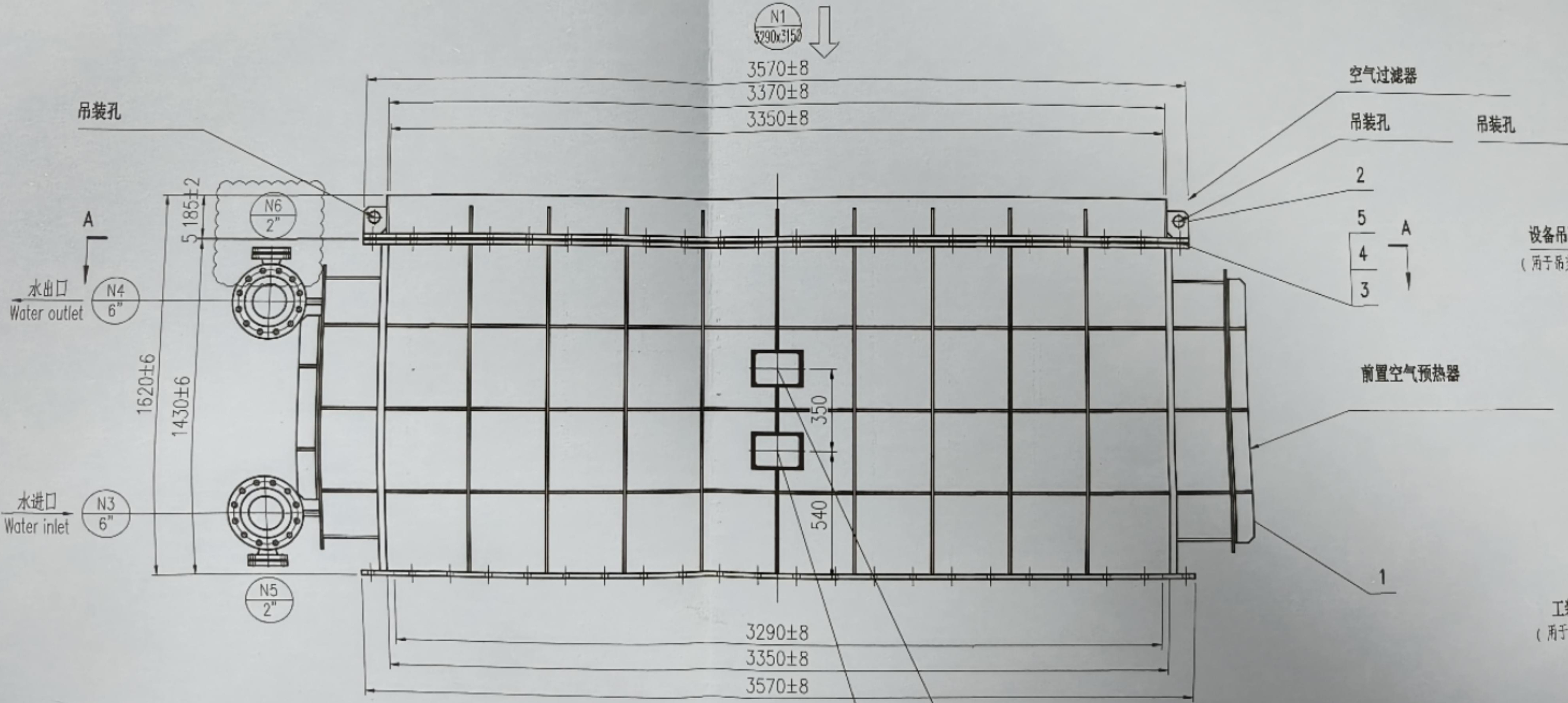
版次 REV.	日期 DATE	绘图 DRAWN	设计 DESIGNED	校核 REVIEWED	审核 APPROVED	批准 AUTHORIZED	描述 DESCRIPTION
绘图	DRAWN	黄杰	2023-06-13				BASF (GUANGDONG) INTEGRATED PROJECT 巴斯夫 (广东) 一体化项目
设计	DESIGNED	黄杰	2023-06-13				
校核	REVIEWED	庄永华	2023-06-13				
审核	APPROVED	张建	2023-06-13				
批准	AUTHORIZED	/	/				
区域	CLUSTER	BIG_CR					位号 TAG NO.: 021E1113_021E1613 & 021F1162_021F1662
装置	PLANT	V021					
项目号	PROJECT NO.	QGIN.028729/12388					
BASF Integrated Site (Guangdong) Co. Ltd							
 We create chemistry							
工作令号	JOB NO.	101856NSH1370	设备等级	CN NO.	230333085/86		
图号	DRAWING NO.	SCR-2325-1-7-0	比例	SCALE	1:50	SHEET: 01 OF 01	版次 REV.NO. R4_0-D-02
图纸视角	PROJECTION						

1

2

3

4



N1
3290x3150

3570±8
3370±8
3350±8

空气过滤器

吊装孔

吊装孔

2

5

4

3

设备吊耳
(用于吊装)

前置空气预热器

1

工装
(用于设计)

N2
3290x3150

A - A

3490±1

19x165=3135

177.5

84-Ø28 (配M24螺栓)

165

25